

May 2021

Newsletter

 **Finbar's**
Catholic Primary School

Dear Parents & Carers

You are receiving a paper copy of this newsletter as some parents are not accessing emails at home or on their mobiles.

However, please let us know which method you prefer.

You will have received information about week beginning 3rd May so below is a reminder:

3rd May Bank Holiday – school closed

6th May Local Elections – school closed

On Friday **7th May** when we are open as usual, we are having a fun maths day in aid of NSPCC.

Also on this day is the **attendance treat** for all of those children who had 100% attendance and punctuality during our attendance incentive.

Have an enjoyable Bank Holiday weekend.

Mrs Conley

May is the month of Mary ...

May is a very special month in the Catholic calendar as it marks the month of Mary. This is when we should take time to think about Mary



and reflect on how she is the Mother of Jesus and Mother to us all.

Meet our staff ~ We have many new parents who may not know our staff due to Covid-19 and not being able to visit school. There are just a few fun facts on each of us!

Mrs Conley started in St Finbar's in 2003
She became Headteacher in 2012

Star sign is Gemini

Favourite colour Orange

Favourite flower Peony

Favourite sweet Green & Black chocolate



Mrs Harkness started in St Finbar's in 2000 as Special Needs Teacher.
She became Deputy Headteacher in 2014

Star sign is Pisces

Favourite colour Pink

Favourite flower White Orchid

Favourite sweet Lindor chocolates

Mrs Flynn started in St Finbar's in 2009
She is currently our Nursery teacher.

Star sign is Pisces

Favourite colour Pink

Favourite flower White rose

Favourite sweet Galaxy



Mrs Makin started in St Finbar's in 2015

She is currently our Reception teacher and Early Years Lead.

Star sign is Taurus

Favourite colour Pink

Favourite flower Tulip

Favourite sweet Praline chocolate

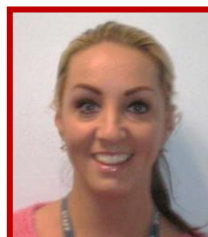
Miss Connor started in St Finbar's in 2010
She is currently our Year 1 teacher and KS1 Lead

Star sign is Libra

Favourite colour Blue

Favourite flower Blue rose

Favourite sweet Cadbury chocolate



Mrs Aslam started in St Finbar's in 2016

She is currently our Year 2 teacher

Star sign is Pisces
Favourite colour Lilac
Favourite flower Lily
Favourite sweet Galaxy

Miss Melia started in St Finbar's in 2014
She is currently our Year 3 teacher

Star sign is Gemini
Favourite colour Dark green
Favourite flower Tulip
Favourite sweet Bonbons

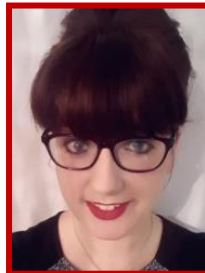


Miss Haresnape started in St Finbar's in 2005
She is currently our Year 4 teacher and KS2 Lead

Star sign is Scorpio
Favourite colour Lilac
Favourite flower Lily
Favourite sweet Toffees

Mrs Whittaker started in St Finbar's in 2015
She is currently our Year 5 teacher

Star sign is Cancer
Favourite colour Red
Favourite flower Rose
Favourite sweet Snickers



Mrs Robertson has been on supply since September 2020
She is currently our Year 6 teacher

Star sign is Pisces
Favourite colour Pink
Favourite flower Tulip
Favourite sweet Lindt dark chocolate



Mrs Kelly started in St Finbar's in 1997
She is the school Admin Officer

Star sign is Gemini
Favourite colour Blue
Favourite flower Gladioli
Favourite sweet Swiss milk chocolate

Mrs Dudley started in St Finbar's in 1991
She is one of our Receptionists



Star sign is Aries

Favourite colour Purple

Favourite flower Tulip

Favourite sweet Dairy Milk



Mrs Monaghan started in St Finbar's in 1989

She is one of our Receptionists

Star sign is Virgo

Favourite colour Green

Favourite flower Carnation

Favourite sweet Ferrero Rocher

Ms Barnes started in St Finbar's in 2015

She is a Higher Level Teaching Assistant

Star sign is Aquarius

Favourite colour Pink

Favourite flower Sunflower

Favourite sweet Any chocolate



Mrs Barrett started in St Finbar's in 1995

She is a Learning Support Assistant

Star sign is Aquarius

Favourite colour Orange

Favourite flower Freesia

Favourite sweet Black Magic chocolate

Mrs Carney started in St Finbar's in 1996

She is our IT assistant/website updater

Star sign is Pisces

Favourite colour Green

Favourite flower Yellow daffodil

Favourite sweet Turkish Delight



Miss Edwards started in St Finbar's in 2014

She is a Learning Support Assistant

Star sign is Scorpio

Favourite colour Yellow

Favourite flower Lily

Favourite sweet American hard gums

Mr Fretwell started in St Finbar's in 2014

He is a Learning Support Assistant



Star sign is Taurus

Favourite colour Blue

Favourite flower Carnation

Favourite sweet Fudge



Mrs McCormack started in St Finbar's in 1996

She is a Learning Support Assistant

Star sign is Scorpio

Favourite colour Red

Favourite flower Tulip

Favourite sweet Bounty

Mr Millington started in St Finbar's in 2012

He is a Higher Level Teaching Assistant

Star sign is Aries

Favourite colour Red

Favourite flower Rose

Favourite sweet Wine gums



Ms Rosario started in St Finbar's in 2004

She is a Learning Support Assistant

Star sign is Capricorn

Favourite colour Purple

Favourite flower Daffodil

Favourite sweet Any chocolate

Mrs Sharples started in St Finbar's in 2018

She is a Learning Support Assistant

Star sign is Scorpio

Favourite colour Green

Favourite flower Forget Me Not

Favourite sweet Fizzy jellies



Mr Conning started in St Finbar's in 2002

He is the Site Manager

Star sign is Taurus

Favourite colour Red

Favourite flower Tulip

Favourite sweet Dark chocolate

Mrs Jones started in St Finbar's in 2015

She is one of our team of cleaners

Star sign is Virgo



Favourite colour Black

Favourite flower Lily

Favourite sweet Crisps



Mrs Rahman started in St Finbar's in 2015

She is one of our team of cleaners

Star sign is Taurus

Favourite colour Green

Favourite flower Rose

Favourite sweet Crunchie

Mrs Rusk started in St Finbar's in 1992

She is one of our team of cleaners

Star sign is Pisces

Favourite colour Blue

Favourite flower Peony

Favourite sweet Milk chocolate



Mrs Spruin started in St Finbar's in 1993

She is one of our team of cleaners

Star sign is Taurus

Favourite colour Blue

Favourite flower Rose

Favourite sweet Turkish Delight

Mrs Simm started in St Finbar's in

She is the cook

Star sign is Taurus

Favourite colour Green

Favourite flower Freesia

Favourite sweet Any dark chocolate



Miss Cleverley started in St Finbar's in

She is a kitchen assistant

Star sign is Virgo

Favourite colour Blue

Favourite flower Sunflower

Favourite sweet Kinder Bueno

Mrs Ryan started in St Finbar's in

She is a kitchen assistant

Star sign is Aries



Favourite colour Red

Favourite flower Rose

Favourite sweet Chocolate eclairs

IMPORTANT INFORMATION FROM PUBLIC HEALTH & CHILDREN SERVICES



Liverpool
City Council

16th April 2021

Dear Parent / Carer,

Re: COVID-19 and overseas travel

Thank you for your continued support in the fight against Coronavirus. We wanted to take this opportunity to remind you there are restrictions in place for international travel.

You can only travel internationally from England where you have a [reasonable excuse to leave the UK](#), such as work. International holidays are not permitted.

Red list travel ban countries

If you have been in or through any of the countries listed here:

[Coronavirus \(COVID-19\): red list travel ban countries - GOV.UK \(www.gov.uk\)](#)

in the previous 10 days, you will be refused entry to the UK.

If you are a British or Irish National, or you have residence rights in the UK, you will be able to enter. You must [quarantine in a government approved hotel](#) for 10 days.

Currently, everyone allowed to enter England from outside the [Common Travel Area \(Ireland, the Channel Islands or the Isle of Man\)](#) must:

- quarantine for 10 days
- take a coronavirus test on day 2 and day 8 of quarantining unless your job permits exemption. You will have to pay for a private test: [shorturl.at/gmxZ4](#)
- follow the [national social distancing rules](#)

If you are self isolating and require further help with shopping, getting prescriptions or mental health please visit here: [shorturl.at/fjyK0](#) Alternatively, please call freephone 0800 169 3032. Our lines are open 8am to 6pm Monday to Friday.

This guidance is available in a range of alternate languages: [shorturl.at/zHJK6](#)

Face coverings

When picking up or dropping off children from school or nursery you should wear a face covering, unless you are exempt and always avoid close contact with others.

Stay safe and many thanks for your continued support.

Matt Ashton

Director of Public Health, Liverpool

Steve Reddy

Director of Children's Services, Liverpool

If you have any of the main symptoms of coronavirus (COVID-19), get a PCR test as soon as possible. Stay at home until you get the result.

The main symptoms of coronavirus are:

- **a high temperature** – this means you feel hot to touch on your chest or back (you do not need to measure your temperature)
- **a new, continuous cough** – this means coughing a lot for more than an hour, or 3 or more coughing episodes in 24 hours (if you usually have a cough, it may be worse than usual)
- **a loss or change to your sense of smell or taste** – this means you've noticed you cannot smell or taste anything, or things smell or taste different to normal

People who are sick with coronavirus may have other flu like symptoms such as:

- body aches
- persistent headaches
- sore throat
- tiredness
- shortness of breath
- nausea or
- diarrhoea

If you don't have any of the main symptoms of coronavirus, you don't need to isolate until you get your result, however you do need to continue to take the usual measures to protect yourself and others from illness.

General Testing (not part of returning to England)

People with symptoms can get a test here:

<https://liverpool.gov.uk/communities-and-safety/emergency-planning/coronavirus/how-to-get-tested/tests-for-people-with-symptoms/>

People without symptoms can access our community testing sites here:

<https://liverpool.gov.uk/smarttesting>

Testing after travel from overseas: www.gov.uk/guidance/coronavirus-covid-19-testing-for-people-travelling-to-england?step-by-step-nav=8c0c7b83-5e0b-4bed-9121-1c394e2f96f3

Mental wellbeing

Don't forget about your own self-care. Discover our supportive online mental wellbeing space for adults: **qwell.io**

DATES FOR YOUR DIARY

MAY		
Day	Date	Details
Monday	3 rd	Bank Holiday – school closed
Thursday	6 th	Local Elections – school closed
Friday	7 th	NSPCC Number Day Attendance Incentive Treat Day
Half Term starts Monday 31 st May – children return to school following 2 staff training days.		June



Never trust an atom. They make up everything!

My new hobby is eating clocks. It's rather time-consuming.

Can you work it out?

$$\text{Orange slice} + \text{Orange slice} = 14$$

$$\text{Whole orange} + \text{Apple} = 18$$

$$\text{Whole orange} + \text{Orange slice} = 13$$

$$\text{Whole orange} = ? \quad \text{Orange slice} = ? \quad \text{Apple} = ?$$